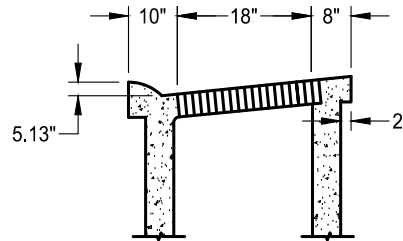
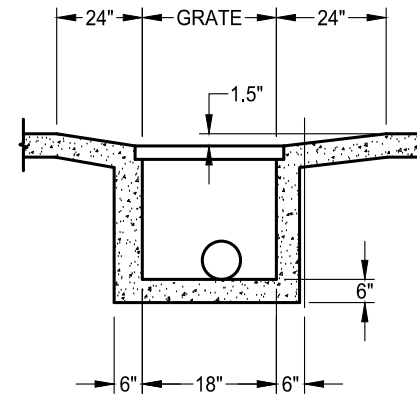


TYPE 2 CURB

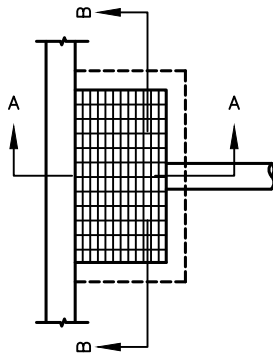


TYPE 1A CURB



SECTION B-B

SECTION A-A



**NOTES**

1. STANDARD DEPRESSION FOR INLET IS 1-1/2".
2. FRAME AND GRATE SHALL CONFORM TO STANDARD DRAWINGS SD-14 AND SD-15.
3. OPEN-BACK HOOD SHALL BE H-20 RATED.
4. ALL EXPOSED EDGES SHALL HAVE A 1/8" R (MINIMUM).
5. AN EDGING TOOL SHALL BE USED ON ALL EDGES WHERE THE CONCRETE SIDEWALK AND CURB MEET THE TOP OF THE HOOD.
6. ALL EXPOSED PARTS TO BE HOT DIP GALVANIZED PER ASTM A123, AFTER FABRICATION.

DATE: 09/22/2007		NOT TO SCALE	
REVISION	BY	APPROVED	DATE

CITY OF ELK GROVE - PUBLIC WORKS

**DROP INLET  
TYPE C**

APPROVED BY:

*Paul Muddoch*

CITY ENGINEER

10/24/2018

DATE

DRAWING NUMBER

**SD - 13**

